



zone 1 - zone 21

II 2 GD Ex d IIC Gb Ex tb IIIC Db - IP66

-20°C

zone 2 - zone 22

II (1) GD Ex d (ia Ga) IIC Gb Ex tb (ia Da) IIIC Db

+40°C

CASSETTE Exd IIC

T6

T5

IP66

-50°C

J.BOX Exd IIC

T 85°C

T 100°C

ATEX - IECEx - INMETRO - GOST



+55°C

Caratteristiche

Le custodie della serie **CCAI** sono adatte ad essere impiegate sia come scatole di derivazione con/senza morsetti, sia per l'installazione di altri apparati elettrici quali interruttori, segnalatori, sezionatori, teleruttori, trasformatori, reattori, ecc. La loro forma quadrata e senza flange esterne, permette di creare pannelli multipli, affiancando più custodie sullo stesso telaio creando batterie compatte utilizzabili in ogni ambiente con ogni tipo di gas, essendo certificate per i gas del gruppo IIC. Le custodie possono essere forate e filettate sia sulle pareti che sui coperchi, su specifica del cliente.

Corpo e coperchio in **acciaio inox AISI 316L**.
Viti di terra interne/esterne in acciaio inox.
Piedini per il fissaggio.

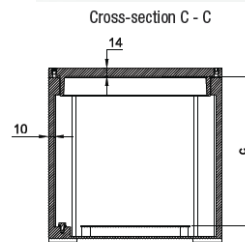
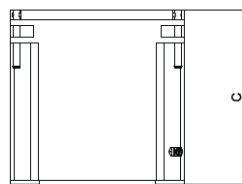
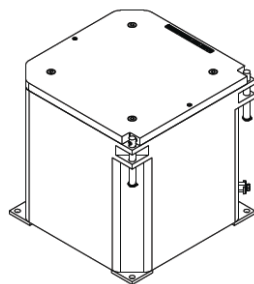
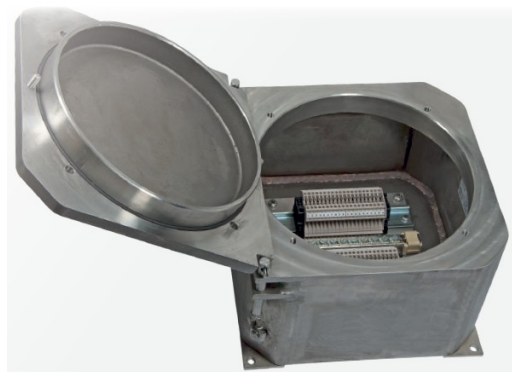
Telaio interno.
Valvola di sfiato e drenaggio.

Code	Outside dimensions		Inside dimensions		Mounting	
	A	C	ØD	c	E	ØG
CCAI-2020	200	200	160	155	180	10
CCAI-3020	300	200	260	155	280	10
CCAI-3030	300	300	260	255	280	10
CCAI-4030	400	300	360	255	380	12

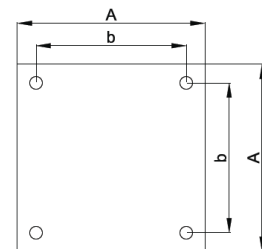
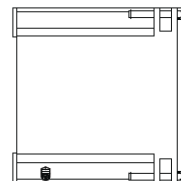
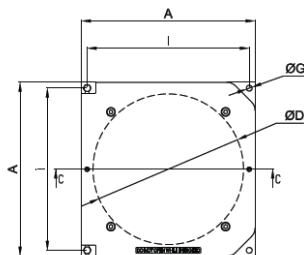
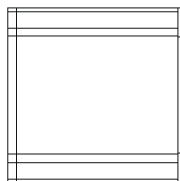
Features
The **CCAI** series boxes are suitable to be used either as junction boxes with/without terminals or as electrical equipment housing such as circuit breakers, signals, disconnectors, remote control switches, transformers, ballasts etc... Their square shape without external flanges allows to built multiple panels, placing side by side several enclosures on the same frame, creating compact switchracks suitable for any hazardous area, being certificated for gases of group IIC. The enclosures can be drilled and threaded either on walls and on covers on specific customer's specification.

Cover and body in **stainless steel AISI 316L**.
Internal/external earth screws in stainless steel.
Fixing lugs.

Mounting plate.
Drain and breather valve.

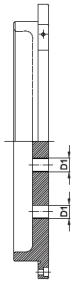
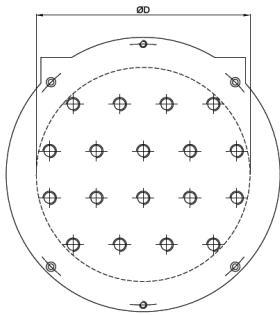
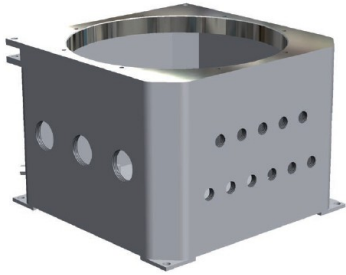


Enclosures	Internal mounting plates		
	A	b	Code
CCAI-2020	119	99	K1-265
CCAI-3020	190	170	K2-265
CCAI-3030	190	170	K2-265
CCAI-4030	260	240	K3-265

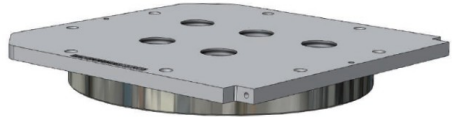


CCAI

TYPE OF ENCLOSURE	HOLE DRILLING IN BODY									
	Drilling area mm	One side								
		MAXIMUM QUANTITY PER HOLE TYPE								
		1	2	3	4	5	6	7	8	10
CCAI-2020	115x125	6	6	4	4	2	1	1	1	1
CCAI-3020	205x120	12	8	6	6	5	3	2	1	1
CCAI-3030	200x220	20	16	12	9	6	6	4	3	1
CCAI-4030	290x225	28	25	20	12	12	6	6	4	2



TYPE OF ENCLOSURE	HOLE DRILLING IN LID				
	ØD	MAXIMUM QUANTITY PER HOLE TYPE			
		3/8"	1/2"	3/4"	M32
CCAI-2020	135	4	6	6	6
CCAI-3020 CCAI-3030	230	7	9	9	9
CCAI-4030	330	18	18	18	18



TYPE OF ENCLOSURE	MAXIMUM NUMBER OF TERMINALS HOUSED									
	TERMINAL CROSS-SECTIONAL AREA									
	2.5	4	6	10	16	35	70	120	185	
CCAI-2020	19	16	13	10	9	4	-	-	-	
CCAI-3020	2x30	2x25	2x22	2x18	2x15	6	-	-	-	
CCAI-3030	2x35	2x28	2x25	2x20	2x15	8	-	-	-	
CCAI-4030	3x40	3x30	2x28	2x23	2x18	12	10	6	4	

